

MAYWEEDS

The identification of 'mayweeds' often causes confusion. They are all members of the daisy family, Asteraceae (Compositae), and have a superficially similar appearance with dissected leaves and daisy-like flowers. As a result of successive taxonomic revisions they have a large number of synonyms. However, it is crucial to accurately identify the species present in an experiment because the ecology and susceptibility to certain herbicides differs between species.

SYNONYMS

Tripleurospermum inodorum 'scentless mayweed' Bayer Code: MATIN

Tripleurospermum maritimum ssp. *inodora*, *Matricaria maritima* ssp. *inodora*,
Matricaria perforata, *Matricaria inodora*, *Chamaemelum inodorum*.

Matricaria recutita 'scented mayweed', 'wild chamomile', Bayer Code: MATCH
Matricaria chamomilla, *Chamomilla recutita*.

Matricaria discoidea 'pineapple weed', 'rayless mayweed.' Bayer Code: MATMT
Matricaria matricarioides, *Matricaria suaveolens*, *Chamomilla suaveolens*

Anthemis arvensis 'corn chamomile' Bayer Code: ANRAR

Anthemis cotula 'stinking mayweed' 'stinking chamomile' Bayer Code: ANRTO
Anthemis foetidum, *Chamaemelum foeticum*

IDENTIFICATION

(For an illustration of the technical terms used here, see the glossary at the end of this leaflet.)

Tripleurospermum inodorum

- 'Seeds': 2-3 mm.long, black, sometimes lighter on the 3-4 sharp angles. Angularly cylindrical with a flat style end.
- Seedling: Leaves bipinnate from second or third true leaf.
- Leaves: 2-3 pinnate, hairless, bright glossy green.
- Smell: Almost none.
- Flower head: 2-4cm. diameter, yellow centre, white rays never reflexed, receptacle flat and solid. No scales on the receptacle between the seeds.
- Ecology: The commonest mayweed of arable crops in England especially on heavier soils. Relatively tolerant of some herbicides used in cereals and rape in the 1980s and robust enough to compete with these crops.

Seed and advice from Herbiseed; www.herbiseed.com e-mail Info@Herbiseed.com

Telephone: 44 (0)118 9349464, Fax: 44 (0)118 9241996

SEED AND TECHNICAL ADVICE FROM HERBISEED WORLD WIDE WEEDS,

E-MAIL: technical@herbiseed.com FAX: +44(0)118 9241996 TELEPHONE: +44 (0)118 9349464

Matricaria recutita

- 'Seeds': 1-1.5mm., dark with strong longitudinal white ridges which make the bulk seed appear grey.
- Seedling: Leaves regularly 1-4 pinnate with pinnae <4 times as long as broad.
- Leaves: Hairless, multiply pinnate with long very narrow, linear segments.
- Smell: Invariably pleasant.
- Flower head: 1-2.5cm. diameter, conical yellow centre, white rays reflexed downward. Receptacle conical, hollow. No scales on the receptacle between the seeds.
- Ecology: A less robust plant than *Tripleurospermum inodora* but more adapted to lighter and drier soils. Its early flowering and short life cycle adapt it well to some horticultural crops. Widely cultivated in Central Europe for the flowers which produce chamomile tea and an essential oil.

Matricaria discoidea

- 'Seeds': 1mm. grey with low ridges and an oblique style end.
- Seedling: First 4 leaves irregularly pinnate with pinnae >4 times as long as broad.
- Leaves: Hairless, multi-pinnate with linear segments.
- Smell: Not unpleasant in moderation, said to resemble that of pineapples.
- Flower head: 1 cm. diameter, conical, yellow with normally NO white rays. Receptacle hollow, conical.
- Ecology: A low growing species which does not compete with arable crops. Restricted to compacted soils, open grassland, and some vegetable crops.

Anthemis arvensis

- 'Seeds': 1.5-2mm. straw coloured, a four-sided cone with a flat base and no tubercles.
- Seedling: First two true leaves very regularly pinnate, with leaflets all exactly opposite, in the same plane with no teeth and broader near their tips than near their base.
- Leaves: Slightly woolly especially underneath, often with a blue-grey tinge. 1-3 pinnate with narrow but short and flat segments.
- Smell: Pleasant when dilute.
- Flower head: 2-3 cm. diameter, yellow centre, white rays. Receptacle shallowly conical, solid, with scales between the seeds which greatly delay seed shedding.
- Ecology: Not very competitive, particularly at the seedling stage. Very susceptible to 'hormone' herbicides and now rare in northern Europe.

Anthemis cotula

- 'Seeds': 1.5-2mm., brown, irregularly conical with obvious tubercles on longitudinal ridges.
- Seedling: First four true leaves irregularly pinnate with flat, irregularly toothed leaflets more or less in the same plane.
- Leaves: Generally hairless but with a grey-green colour. 2-3 pinnate with the segments flat, long and narrow.
- Smell: Strong, astringent unless very dilute.
- Flower head: 1-2.5cm. diameter, yellow centre, white rays become reflexed, receptacle steeply conical in fruit with a few teeth between the seeds near the apex.
- Ecology: No longer a common arable weed, now confined to compacted areas and thin crops on headlands.

SOME OTHER SPECIES

Seed and advice from Herbiseed; www.herbiseed.com e-mail Info@Herbiseed.com

Telephone: 44 (0)118 9349464, Fax: 44 (0)118 9241996

SEED AND TECHNICAL ADVICE FROM HERBISEED WORLD WIDE WEEDS,

E-MAIL: technical@herbiseed.com FAX: +44(0)118 9241996 TELEPHONE: +44 (0)118 9349464

Tripleurospermum maritimum ssp. maritimum 'sea mayweed'

Bayer code MATMA

[*Matricaria maritima*]

This taxon is sometimes considered a separate species to *T. inodorum*. It tends to be biennial or perennial with somewhat succulent leaves and prostrate habit. It is restricted to maritime habitats.

Tripleurospermum tenuifolium [*Matricaria trichophylla*],
[*Chamaemelum trichophyllum*].

Bayer Code: MATTR

Taller than *T. inodorum* with larger flowers (2-4cm.) and brown rather than black seeds. Restricted to the Balkans.

Anthemis ruthenica *A. neilreichii*,

Bayer Code: ANTRU

Plant profusely branched, densely hairy, leaves simple to bi-pinnate with broad segments. Pleasant citrus smell when crushed. Flower heads 1-2.5cm. diameter, Receptacle conical, scales small-toothed, seed cylindrical. Restricted to the Balkans and Asia.

Anthemis Altissima *A. cota*, *Cota altissima*,

Bayer Code: ANTAL

Leaves grey-green, regularly bipinnate. Stem below flower head strongly thickened. Flower 2-4 cm. diameter, receptacle flat, scales long pointed. Seeds brown-black, flattened, ten ribbed. Southern Europe and the Balkans.

Anthemis austriaca *A. cotiformis*

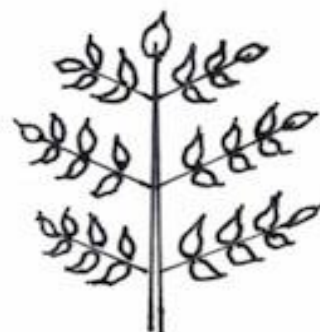
Bayer Code: ANTAU

Very woolly, grey-green, bi-pinnate leaves with short narrow segments. Seeds light brown, flattened, strongly angled. East Mediterranean and Balkans.

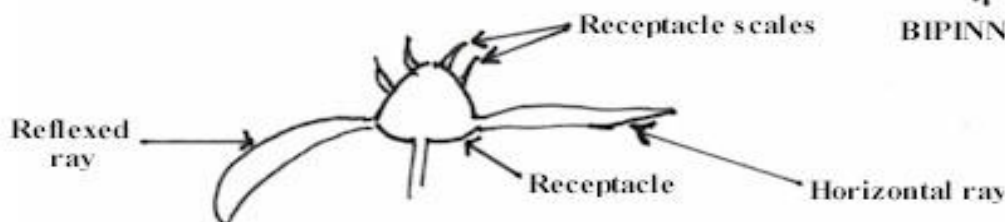
GLOSSARY



PINNATE



BIPINNATE



Seed and advice from Herbiseed; www.herbiseed.com e-mail Info@Herbiseed.com

Telephone: 44 (0)118 9349464, Fax: 44 (0)118 9241996

SEED AND TECHNICAL ADVICE FROM HERBISEED WORLD WIDE WEEDS,

E-MAIL: technical@herbiseed.com FAX: +44(0)118 9241996 TELEPHONE: +44 (0)118 9349464